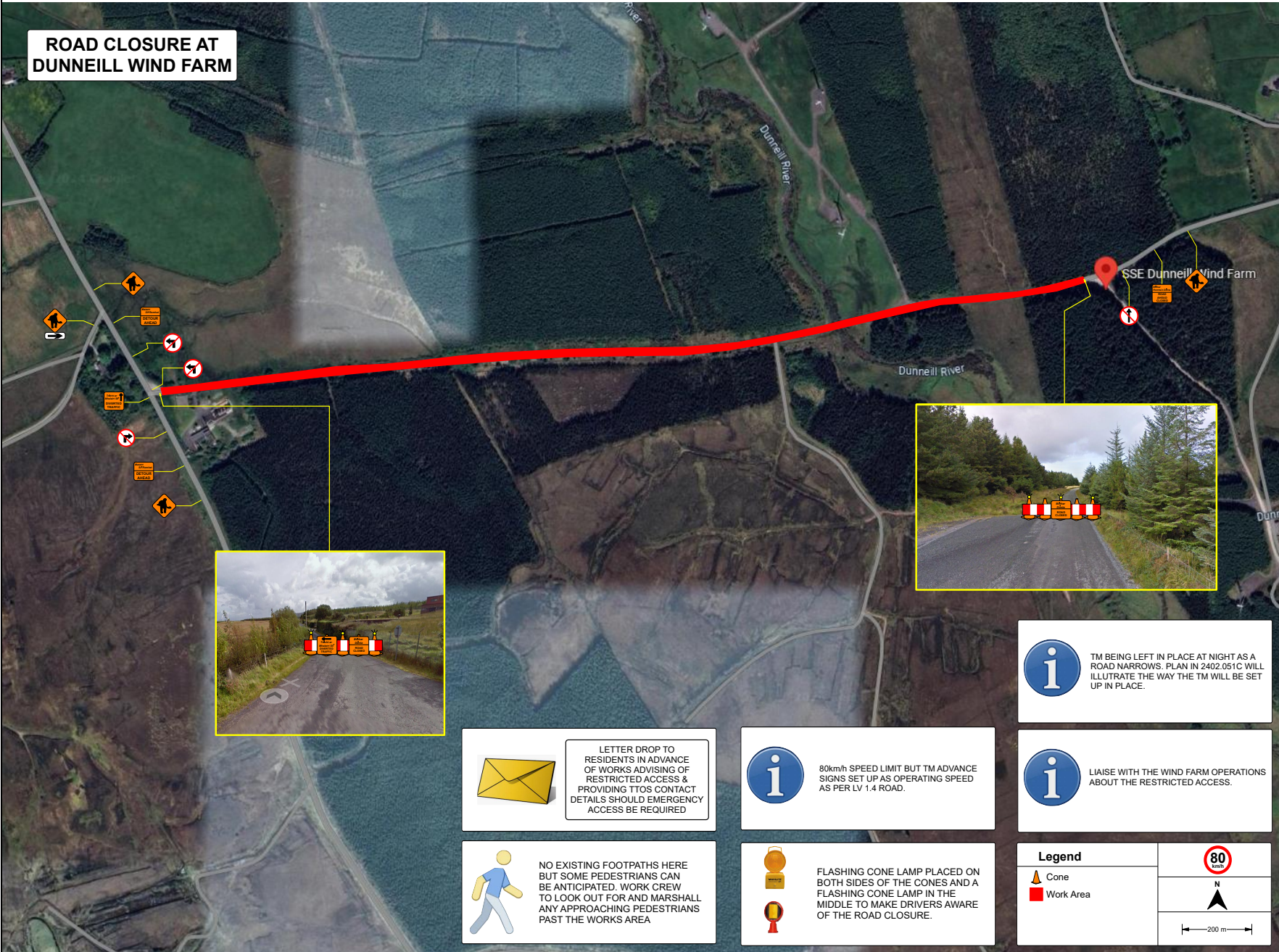



**ROAD CLOSURE AT
DUNNEILL WIND FARM**





TM TYPE SELECTION	Road Closure/Detour
CONSULTATION WITH	Garda Via E-mail
PEDESTRIAN ROUTE	See Notes
ROAD CROSS SECTION	5m
WORK ZONE WIDTH	5m
LATERAL SAFETY ZONE	N/A
UNOBSTRUCTED WIDTH	N/A
CONE SIZE	750mm
SIGN SIZE	600mm
TAPER LENGTH	N/A
TEMP TM SUPERVISOR	TBC
ROAD WORKS TYPE	N/A
LV ROAD TYPE	LV.2.1(1.4)
ADVANCE SIGN DISTANCE	180m
ADVANCE SIGN No	3
ADVANCE SIGN SPACING	60m
END WORKS SIGN DIST.	N/A
LONGWAYS SAFETY ZONE	N/A
CONE SPACING - TAPER	N/A
CONE SPACING - LENGTH	N/A
MAX SHUTTLE LENGTH	N/A
CENTRE-LINE CONING	No
SPEED LIMIT ORDER	No
SIGN VISIBILITY	60m





 LETTER DROP TO RESIDENTS IN ADVANCE OF WORKS ADVISING OF RESTRICTED ACCESS & PROVIDING TTOS CONTACT DETAILS SHOULD EMERGENCY ACCESS BE REQUIRED

 80km/h SPEED LIMIT BUT TM ADVANCE SIGNS SET UP AS OPERATING SPEED AS PER LV 1.4 ROAD.



 NO EXISTING FOOTPATHS HERE BUT SOME PEDESTRIANS CAN BE ANTICIPATED. WORK CREW TO LOOK OUT FOR AND MARSHALL ANY APPROACHING PEDESTRIANS PAST THE WORKS AREA


 FLASHING CONE LAMP PLACED ON BOTH SIDES OF THE CONES AND A FLASHING CONE LAMP IN THE MIDDLE TO MAKE DRIVERS AWARE OF THE ROAD CLOSURE.

 TM BEING LEFT IN PLACE AT NIGHT AS A ROAD NARROWS. PLAN IN 2402.051C WILL ILLUSTRATE THE WAY THE TM WILL BE SET UP IN PLACE.

 LAISE WITH THE WIND FARM OPERATIONS ABOUT THE RESTRICTED ACCESS.

Legend

-  Cone
-  Work Area


N
200m

Client:	RENCON CIVILS LTD	Designed:	CC	Drawing No:	2403.051A	REV	Revision Detail	Date	04/04/2024
Project Title:	CABLE WORKS AT DUNNEILL WIND FARM	Drawn:	CC	Revision No:	0	0	Initial draft for review		
Drawing Title:	TM PLAN_CABLE_WORKS_AT_DUNNEILL_WIND_FARM	Checked:	SO						
		Scale:	NTS						
		Date:	04/04/2024						



ROAD CLOSURE AT DUNNEILL WIND FARM



Legend	
Cone	
Work Area	

